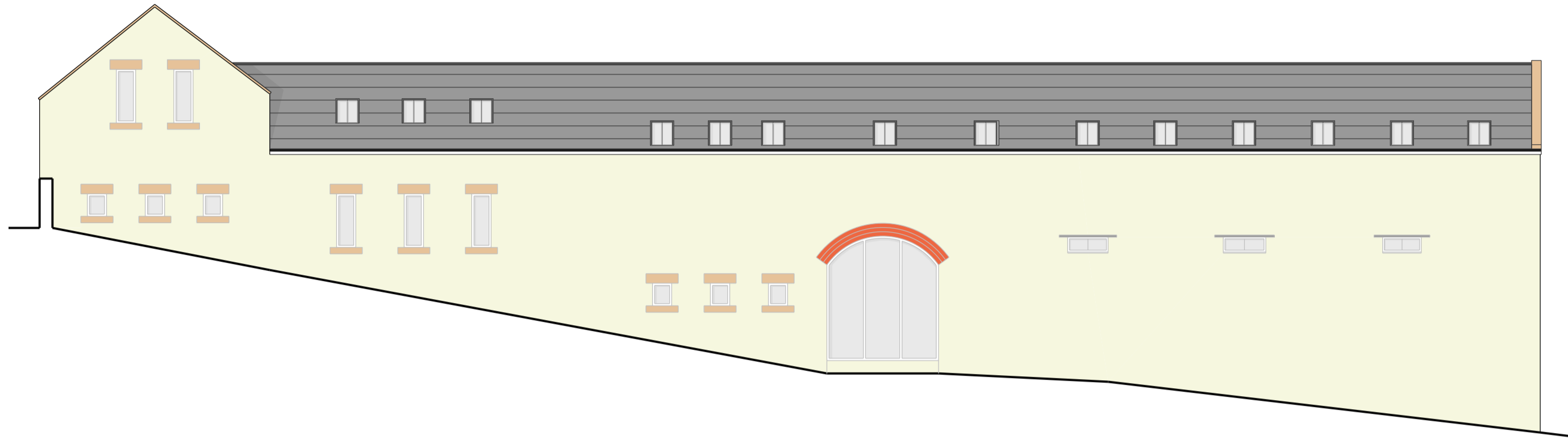
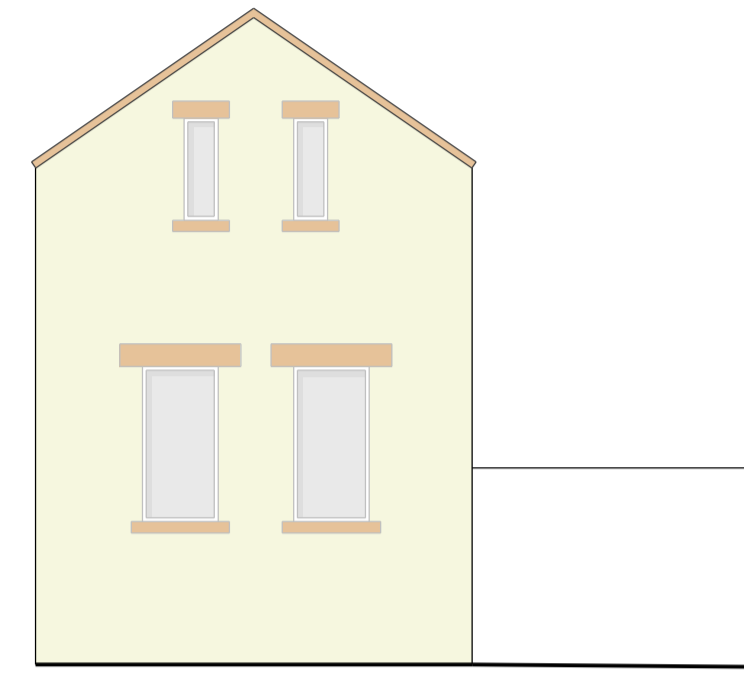


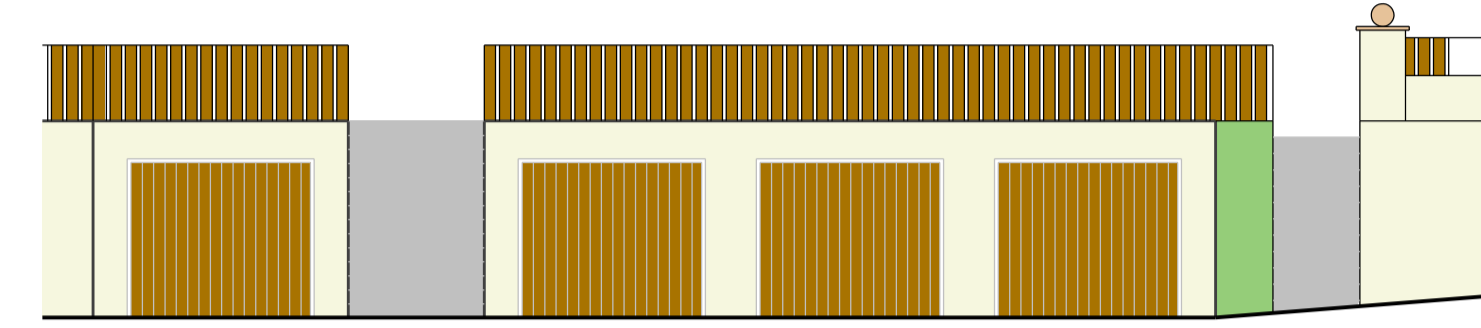
DWELLING 1 ELEVATIONS



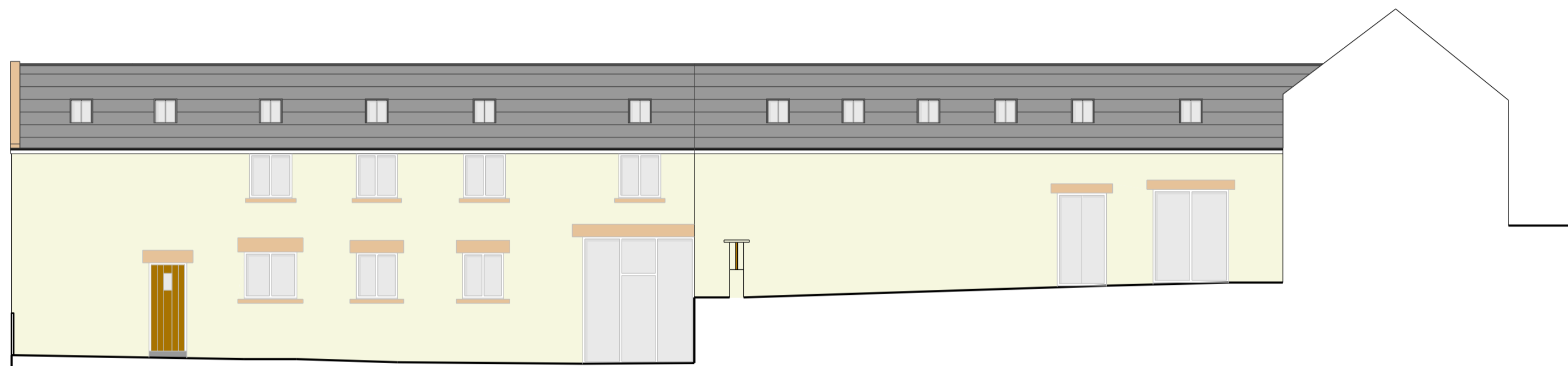
DWELLING 1 SIDE ELEVATION



DWELLING 1 FRONT ELEVATION

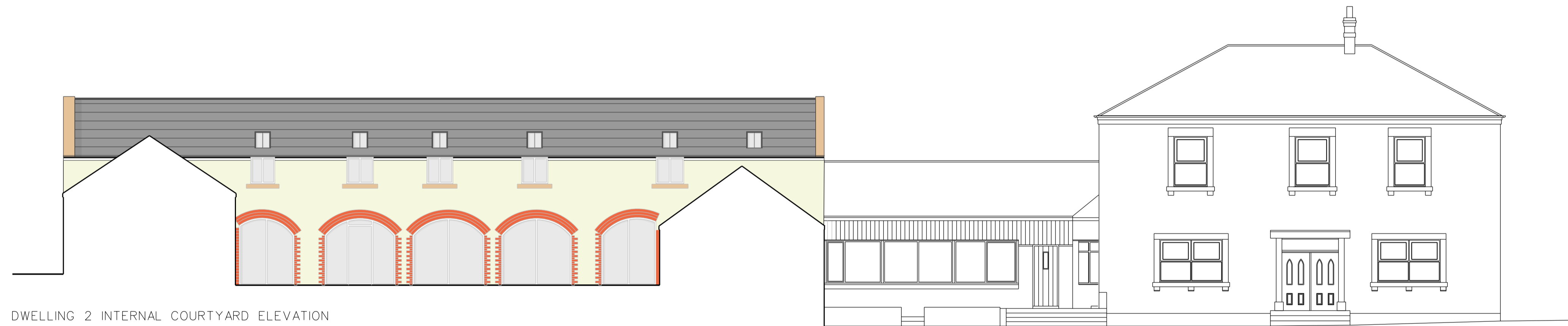


GARAGE FRONT ELEVATION

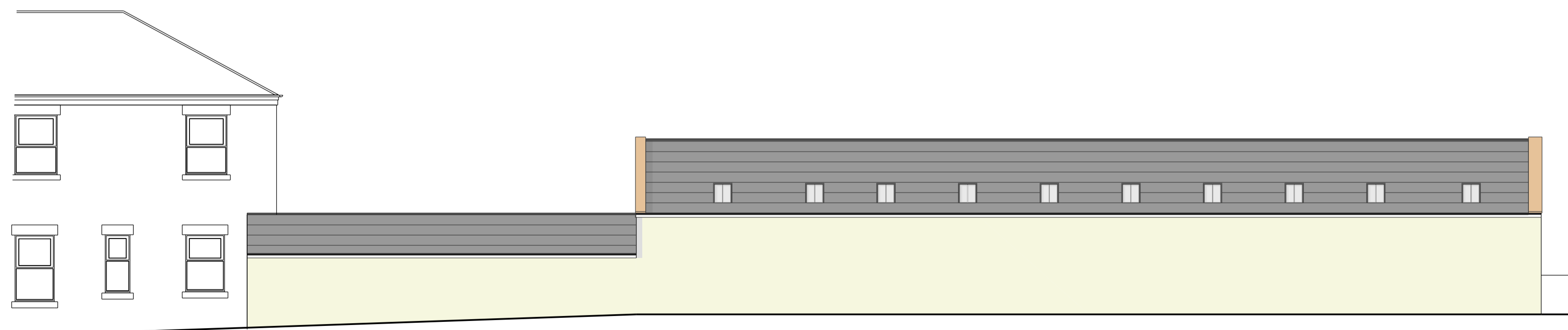


DWELLING 1 INTERNAL COURTYARD ELEVATION

DWELLING 2 ELEVATIONS



DWELLING 2 INTERNAL COURTYARD ELEVATION



DWELLING 2 / 3 REAR ELEVATION

MATERIAL SPECIFICATION
 - ANY NEW STONE TO MATCH EXISTING RANDOM RUBBLE
 - NEW WINDOWS TO BE GREY ALUMINIUM FRAMED AS L.A. APPROVAL
 - NEW DOORS TO BE SOLID TIMBER AS L.A. APPROVAL
 - NEW STONE WINDOW HEADS AND CILLS TO MATCH EXISTING
 - 560 X 980 SIDE HUNG CONSERVATION TYPE ROOFLIGHTS

C

A	30.08.07 - WINDOW NOTES AMENDED AS PLANNING COMMENTS. LARGE WINDOWS IN UNIT 1 AND UNIT 2 REDUCED. RIDGE VENT NOTE ADDED.
B	18.09.07 - HIP ROOF REMOVED FROM UNIT 1 AND MADE A GABLE ROOF. FIRST FLOOR WINDOWS TO UNIT 1 REVISED
C	08.10.07 - WINDOWS TO UNIT 1 GABLE REVISED AS PLANNING COMMENTS